



Best Quality Products

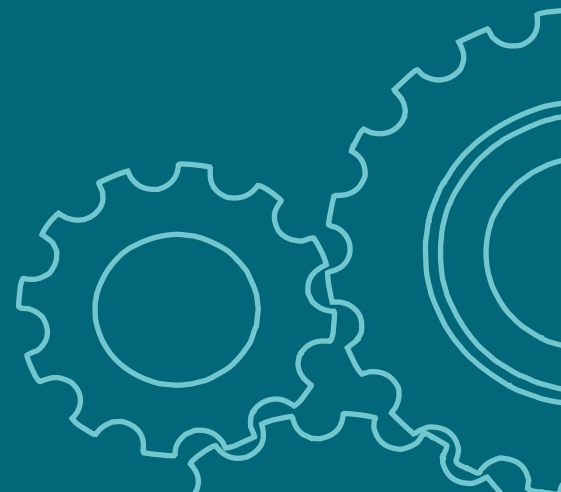
SHIV

CETRON GEARS



MANUFACTURERS OF :

- ⊗ Worm Reduction Gear Boxes
- ⊗ Helical Gear Boxes, Helical Gear Motors
- ⊗ Shaft Mounted Speed Reducer
- ⊗ Extruder Helical Gear Box
- ⊗ Line Polish Machine All Spare Parts
- ⊗ Multicutter Machine All Spare Parts
- ⊗ All Machine Spare Manufacturers





At **SHIV** we follow long tradition of being customer **FRIENDLY** company by providing services & products which **EXCEEDS** their expectations. **SHIV** is constantly **INNOVATIVE** for new solutions that improve **HUMAN** life and make feature **TECHNOLOGIES** possible. **SHIV** strongly believe in “**GREEN PLANET**” & also that anyone can contribute towards green environment by using **ENERGY** responsibly hence **SHIV** is committed to design products with maximum **EFFICIENCY**, **HIGHEST**, **EFFICACY**, **FIT & FORGET** technology ensuring long lasting trouble free operations.

With **BEST** in class machineries at all **MANUFACTURING & QUALITY** Check levels **SHIV** possess most modern manufacturing facility which again reflects our **VISION** to become an environment friendly company & create brighter **FUTURE** for all through **HIGH PRECISION**.

BE THE PART OF OUR MISSION GREEN BY USING OUR PRODUCTS.



SALIENT FEATURES OF SHIV GEAR UNIT :

Gear unit are Manufactured by using best quality materials with high accuracy the manufacturing process. Our gear unit are robust in construction. Following are the important of major plans :

Gear Housing : Gear Housing is made of closely grained Cast Iron, which is oil tight and dust proof. Machining of critical mounting surfaces and boring is done on highly precision machines.

Gears : Gears are made of Alloys Steel, Gear are case hardened. Gears Teeth Grinding done on German make 'WMW' Grinding machine. Lead and profile checked on 'MAAG' Gear tester

Output Shaft : Wheel shaft are made of high tensile Carbon Steel.

Bearings : Input shaft, intermediate shaft & output shaft are Mounted on Tapper Roller Bearings.

Lubrications : lubrication of Gears & Bearings achived automatically by splash of oil from sump In some cases force Lubrication is Provided

INFORMATION REQUIRED FOR SELECTION OF GEAR UNIT :

- ▶ Type of model of gear unit suitable for application.
- ▶ Type of prime mover, its HP Rating and RPM
- ▶ Required reduction ratio or output RPM of gear unit
- ▶ Details of driven machine, actual power (HP) & speed (RPM) required. Detail of peak and shock load with magnitude & duration.
- ▶ Type of drive provided between (I) Prime mover and reducer (II) Reducer & Driven machine.
- ▶ Duration of working hours per day.
- ▶ Ambient operating condition i.e. location temperature, humidity, corrosion etc.
- ▶ Position of output shaft either horizontal or vertical.
- ▶ Position of output shaft either Right or Left Hand with respect to input shaft or otherwise.
- ▶ Sketch of available space for gear box installation is preferable.

CLASSIFICATION OF LOADS & LOAD FACTORS :

| Type of Machine | Application | Load Factor |
|---------------------------|-----------------------------|-------------|
| Agitators & Mixers | Pure Liquid | U |
| | Liquid & Solid | M |
| | Liquid with various density | M |
| Clay Processing Machinery | Brick Press | H |
| | Briquette Machine | H |
| | Plug Mill | M |
| Conveyers | Uniformly Loaded | U |
| | Non Uniformly Loaded | M |
| Cranes | Main Hoist | M |
| | Bridge Travel | M |
| Crushers | Ore, Stone | H |
| | Sugar | M |
| | Bucket Uniform Load | U |
| | Bucket Heavy Load | M |
| Elevators | Bucket Continuous Load | U |
| | Centrifugal Discharge | U |
| | Gravity Discharge | U |
| Food Industry | Beet Slicer | M |
| | Cereal Cooker | U |
| Laundry Machines | Washers | M |
| | Tumblers | M |
| Oil Industry | Chillers | M |
| | Rotary Kilns | M |

| Type of Machine | Application | Load Factor |
|---------------------------|-------------------------|-------------|
| Paper Mill | Bleacher conveyor press | M |
| | Winder | H |
| | Calendars | H |
| | Agitators | M |
| Rubber & Plastic Industry | Crackers | H |
| | Fixing Mills | H |
| | Laboratory Equipment | M |
| | Refiners, Extruders | M |
| | Sheeters, Cutting | M |
| | Tubers and Strainers | M |
| Sugar | Warming Mills | M |
| | Cane Knives | M |
| | Crusher | M |
| | Mill | H |
| | Batchers | M |
| Textile Industry | Dyeing Machinery | M |
| | Spinners, Batches | M |
| | Washers, Calendars | M |
| | Winders | M |
| Wire Making Machinery | Drawing | M |
| | Flattening | M |
| Screens | Winding | M |
| | Air Washing | U |
| | Rotary - Stone/Gravel | M |

SERVICE FACTORS :

| Prime Mover | Duration Of Service (Hours/Day) | Types of Load | | |
|----------------|---------------------------------|---------------|------------------|---------------|
| | | Uniform U | Moderate Shock M | Heavy Shock H |
| Electric Motor | 2 | 0.80 | 0.90 | 1.30 |
| | 8 | 0.90 | 1.10 | 1.50 |
| | 12 | 1.00 | 1.30 | 1.60 |
| | 24 | 1.30 | 1.50 | 1.80 |

Important Notes :

- ▶ Gear units are supplied without oil so ensure to fill oil before operation.
- ▶ It is recommended to use HP make ENKLO 320 oil or equivalent.
- ▶ For changing the position of the output shaft, please transfer fan and fan cover at other end of input shaft without dismantling the gear unit.
- ▶ Worm shaft thread - right hand



| Worm Shaft R.P.M. | Gear Ratio | Worm Wheel R.P.M. | SIZE OF UNIT in Inch | | | | | | | |
|-------------------|------------|-------------------|----------------------|------|------|------|------|------|------|------|
| | | | 1.125 | 1.75 | 2 | 2.25 | 2.5 | 3 | 3.5 | 4 |
| 1500 | 5:1 | 300 | 0.58 | 1.48 | 2.90 | 3.40 | 3.91 | 8.32 | 10.2 | 16.3 |
| 1000 | | 200 | 0.53 | 1.28 | 2.20 | 2.60 | 2.99 | 6.37 | 7.60 | 12.7 |
| 750 | | 150 | 0.44 | 1.10 | 1.90 | 2.20 | 2.53 | 5.17 | 6.30 | 10.7 |
| 500 | | 100 | 0.36 | 0.80 | 1.30 | 1.70 | 1.96 | 3.10 | 4.70 | 8.30 |
| 1500 | 7.5:1 | 200 | 0.51 | 1.27 | 2.40 | 3.00 | 3.45 | 6.38 | 9.20 | 11.9 |
| 1000 | | 133 | 0.46 | 1.11 | 1.80 | 2.30 | 2.65 | 5.05 | 6.80 | 9.50 |
| 750 | | 100 | 0.38 | 0.90 | 1.50 | 1.90 | 2.19 | 4.30 | 5.50 | 8.10 |
| 500 | | 66.7 | 0.31 | 0.65 | 1.10 | 1.50 | 1.73 | 2.70 | 4.10 | 6.20 |
| 1500 | 10:1 | 150 | 0.45 | 1.06 | 1.90 | 2.40 | 2.76 | 5.13 | 8.00 | 9.70 |
| 1000 | | 100 | 0.39 | 0.89 | 1.50 | 2.10 | 2.42 | 4.07 | 6.30 | 7.90 |
| 750 | | 75 | 0.33 | 0.80 | 1.30 | 1.70 | 1.96 | 3.37 | 5.20 | 6.50 |
| 500 | | 50 | 0.27 | 0.59 | 0.90 | 1.40 | 1.61 | 2.00 | 4.00 | 5.00 |
| 1500 | 15:1 | 100 | 0.36 | 0.87 | 1.60 | 2.00 | 2.30 | 4.40 | 5.70 | 7.00 |
| 1000 | | 66.7 | 0.29 | 0.69 | 1.20 | 1.50 | 1.73 | 3.42 | 4.50 | 5.50 |
| 750 | | 50 | 0.25 | 0.60 | 1.00 | 1.30 | 1.50 | 2.82 | 3.70 | 4.70 |
| 500 | | 33.3 | 0.20 | 0.50 | 0.80 | 0.97 | 1.12 | 1.80 | 2.80 | 3.70 |
| 1500 | 20:1 | 75 | 0.31 | 0.70 | 1.10 | 1.50 | 1.73 | 3.25 | 4.50 | 6.50 |
| 1000 | | 50 | 0.24 | 0.57 | 0.88 | 1.20 | 1.38 | 2.50 | 3.50 | 5.00 |
| 750 | | 37.5 | 0.21 | 0.50 | 0.85 | 1.00 | 1.15 | 2.02 | 3.00 | 4.20 |
| 500 | | 25 | 0.17 | 0.39 | 0.60 | 0.80 | 0.92 | 1.40 | 2.30 | 3.30 |
| 1500 | 25:1 | 60 | 0.27 | 0.68 | 1.00 | 1.40 | 1.61 | 2.77 | 4.00 | 4.90 |
| 1000 | | 40 | 0.22 | 0.54 | 0.80 | 1.10 | 1.27 | 2.15 | 3.00 | 4.30 |
| 750 | | 30 | 0.19 | 0.46 | 0.72 | 0.95 | 1.09 | 1.80 | 2.50 | 3.70 |
| 500 | | 20 | 0.15 | 0.37 | 0.50 | 0.74 | 0.85 | 1.10 | 1.90 | 2.90 |
| 1500 | 30:1 | 50 | 0.21 | 0.60 | 0.95 | 1.20 | 1.38 | 2.55 | 3.60 | 4.40 |
| 1000 | | 33.3 | 0.18 | 0.48 | 0.78 | 0.98 | 1.13 | 1.97 | 2.80 | 3.70 |
| 750 | | 25 | 0.16 | 0.42 | 0.67 | 0.82 | 0.94 | 1.61 | 2.30 | 3.10 |
| 500 | | 16.6 | 0.13 | 0.33 | 0.50 | 0.65 | 0.75 | 1.00 | 1.70 | 2.40 |
| 1500 | 40:1 | 37.5 | 0.19 | 0.50 | 0.77 | 1.10 | 1.27 | 2.02 | 3.10 | 3.70 |
| 1000 | | 25 | 0.15 | 0.40 | 0.59 | 0.88 | 1.00 | 1.47 | 2.40 | 3.00 |
| 750 | | 18.7 | 0.13 | 0.35 | 0.62 | 0.72 | 0.83 | 1.25 | 2.00 | 2.50 |
| 500 | | 12.5 | 0.11 | 0.27 | 0.40 | 0.55 | 0.63 | 0.89 | 1.40 | 1.80 |
| 1500 | 50:1 | 30 | 0.16 | 0.40 | 0.60 | 0.94 | 1.08 | 1.65 | 2.80 | 3.00 |
| 1000 | | 20 | 0.13 | 0.31 | 0.46 | 0.75 | 0.86 | 1.22 | 2.20 | 2.40 |
| 750 | | 15 | 0.11 | 0.28 | 0.40 | 0.60 | 0.69 | 1.01 | 1.70 | 2.00 |
| 500 | | 10 | 0.09 | 0.20 | 0.30 | 0.46 | 0.53 | 0.68 | 1.10 | 1.60 |
| 1500 | 60:1 | 25 | 0.10 | 0.33 | 0.51 | 0.81 | 0.93 | 1.27 | 2.50 | 2.70 |
| 1000 | | 16.6 | 0.10 | 0.28 | 0.40 | 0.58 | 0.67 | 1.00 | 1.90 | 2.10 |
| 750 | | 12.5 | 0.08 | 0.24 | 0.37 | 0.46 | 0.53 | 0.84 | 1.50 | 1.70 |
| 500 | | 8.3 | 0.06 | 0.19 | 0.25 | 0.33 | 0.38 | 0.57 | 1.00 | 1.40 |
| 1500 | 70:1 | 21.4 | 0.10 | 0.30 | 0.47 | 0.61 | 0.70 | 1.22 | 1.80 | 2.50 |
| 1000 | | 14.7 | 0.09 | 0.24 | 0.35 | 0.51 | 0.59 | 0.94 | 1.50 | 2.00 |
| 750 | | 10.7 | 0.07 | 0.21 | 0.30 | 0.40 | 0.46 | 0.77 | 1.20 | 1.70 |
| 500 | | 7.14 | 0.05 | 0.17 | 0.20 | 0.28 | 0.32 | 0.50 | 0.80 | 1.40 |

Input Horse Power Capacities



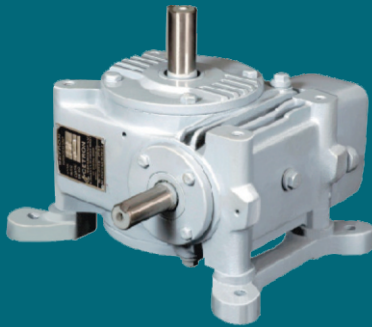
SHIV
CETRON GEARS

| Worm Shaft R.P.M. | Gear Ratio | Worm Wheel R.P.M. | SIZE OF UNIT in Inch | | | | | | | |
|-------------------|------------|-------------------|----------------------|------|------|------|------|------|------|------|
| | | | 5 | 6 | 7 | 8 | 9 | 10.5 | 12 | 14 |
| 1500 | 5:1 | 300 | 27.6 | 43.7 | 59.0 | 78.5 | 93.1 | 122 | 131 | 177 |
| 1000 | | 200 | 21.3 | 31.0 | 44.4 | 57.2 | 72.8 | 84.4 | 98.9 | 128 |
| 750 | | 150 | 17.3 | 24.3 | 36.5 | 45.9 | 58.2 | 65.0 | 80.0 | 99.0 |
| 500 | | 100 | 13.1 | 17.5 | 26.4 | 32.2 | 42.7 | 42.7 | 59.4 | 67.9 |
| 1500 | 7.5:1 | 200 | 21.3 | 32.0 | 46.6 | 66.9 | 76.6 | 110 | 121 | 164 |
| 1000 | | 133 | 17.1 | 24.3 | 34.4 | 50.7 | 60.1 | 78.6 | 90.8 | 119 |
| 750 | | 100 | 14.4 | 19.9 | 28.5 | 41.1 | 49.5 | 60.1 | 73.0 | 95.0 |
| 500 | | 66.7 | 11.1 | 14.7 | 21.3 | 30.1 | 37.8 | 39.8 | 53.5 | 63.1 |
| 1500 | 10:1 | 150 | 19.3 | 26.7 | 36.3 | 58.7 | 61.1 | 103 | 108 | 156 |
| 1000 | | 100 | 15.0 | 20.7 | 29.9 | 43.5 | 49.5 | 70.8 | 80.9 | 116 |
| 750 | | 75 | 12.4 | 17.0 | 23.7 | 34.9 | 41.7 | 56.3 | 65.5 | 90.2 |
| 500 | | 50 | 9.40 | 12.9 | 17.8 | 25.7 | 33.0 | 35.9 | 48.5 | 64.0 |
| 1500 | 15:1 | 100 | 11.6 | 21.8 | 29.5 | 40.1 | 47.5 | 78.6 | 88.5 | 134 |
| 1000 | | 66.7 | 9.00 | 16.7 | 22.9 | 29.8 | 37.8 | 56.3 | 64.8 | 94.1 |
| 750 | | 50 | 7.70 | 13.6 | 17.9 | 24.3 | 32.0 | 42.7 | 51.9 | 70.8 |
| 500 | | 33.3 | 5.90 | 11.1 | 13.0 | 18.2 | 24.8 | 29.1 | 38.3 | 48.5 |
| 1500 | 20:1 | 75 | 11.1 | 17.1 | 22.3 | 28.7 | 37.8 | 57.2 | 71.1 | 110 |
| 1000 | | 50 | 8.30 | 13.1 | 17.4 | 23.4 | 30.1 | 44.6 | 52.4 | 80.5 |
| 750 | | 37.5 | 7.00 | 10.9 | 14.1 | 19.6 | 24.7 | 34.9 | 42.0 | 61.0 |
| 500 | | 25 | 5.30 | 8.20 | 10.5 | 14.5 | 19.8 | 25.2 | 30.7 | 41.7 |
| 1500 | 25:1 | 60 | 9.40 | 14.8 | 20.7 | 27.1 | 33.0 | 53.4 | 62.1 | 93.1 |
| 1000 | | 40 | 6.80 | 11.3 | 15.9 | 20.8 | 26.6 | 38.8 | 46.5 | 67.9 |
| 750 | | 30 | 5.60 | 9.00 | 12.8 | 17.0 | 22.0 | 30.1 | 36.9 | 51.4 |
| 500 | | 20 | 4.40 | 6.60 | 9.40 | 12.0 | 16.7 | 20.4 | 26.7 | 34.9 |
| 1500 | 30:1 | 50 | 8.00 | 12.1 | 18.3 | 25.4 | 28.3 | 41.7 | 53.1 | 79.5 |
| 1000 | | 33.3 | 5.90 | 9.70 | 13.6 | 20.0 | 24.1 | 34.9 | 39.8 | 56.3 |
| 750 | | 25 | 5.00 | 8.00 | 11.4 | 16.3 | 19.2 | 25.2 | 31.7 | 42.7 |
| 500 | | 16.6 | 3.90 | 6.10 | 8.40 | 11.4 | 14.5 | 18.0 | 23.6 | 30.1 |
| 1500 | 40:1 | 37.5 | 6.20 | 10.1 | 14.9 | 18.5 | 22.9 | 34.9 | 43.2 | 62.1 |
| 1000 | | 25 | 4.80 | 7.70 | 11.1 | 14.3 | 17.8 | 26.2 | 31.8 | 46.6 |
| 750 | | 18.7 | 4.10 | 6.10 | 8.90 | 11.7 | 15.1 | 19.4 | 25.4 | 34.0 |
| 500 | | 12.5 | 3.10 | 4.90 | 6.60 | 8.90 | 11.5 | 13.7 | 18.6 | 24.3 |
| 1500 | 50:1 | 30 | 5.20 | 8.50 | 13.0 | 17.6 | 21.0 | 27.2 | 36.0 | 51.0 |
| 1000 | | 20 | 4.00 | 6.50 | 10.0 | 12.8 | 15.7 | 23.3 | 26.8 | 37.8 |
| 750 | | 15 | 3.30 | 5.50 | 8.10 | 10.3 | 13.1 | 17.4 | 21.3 | 26.2 |
| 500 | | 10 | 2.60 | 4.20 | 5.70 | 7.60 | 9.80 | 11.3 | 15.6 | 19.0 |
| 1500 | 60:1 | 25 | 4.30 | 7.10 | 10.5 | 17.0 | 19.1 | 24.3 | 31.2 | 43.7 |
| 1000 | | 16.6 | 3.30 | 5.30 | 8.20 | 12.6 | 14.5 | 17.8 | 22.8 | 32.0 |
| 750 | | 12.5 | 2.80 | 4.50 | 6.90 | 10.0 | 12.4 | 14.8 | 18.2 | 23.3 |
| 500 | | 8.3 | 2.10 | 3.40 | 5.30 | 7.20 | 9.70 | 10.3 | 13.6 | 17.0 |
| 1500 | 70:1 | 21.4 | 3.80 | 6.00 | 9.30 | 11.8 | 14.6 | 18.5 | 26.4 | 36.9 |
| 1000 | | 14.3 | 2.80 | 4.60 | 7.30 | 9.30 | 11.6 | 14.7 | 19.9 | 28.1 |
| 750 | | 10.7 | 2.40 | 4.00 | 5.90 | 7.70 | 10.4 | 11.5 | 16.1 | 20.4 |
| 500 | | 7.14 | 1.90 | 3.00 | 4.50 | 5.90 | 8.40 | 8.10 | 12.2 | 14.7 |



SHIV
CETRON GEARS

Adaptable Type Worm Gear Unit



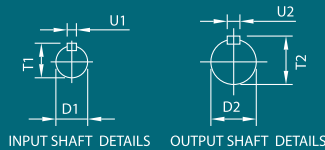
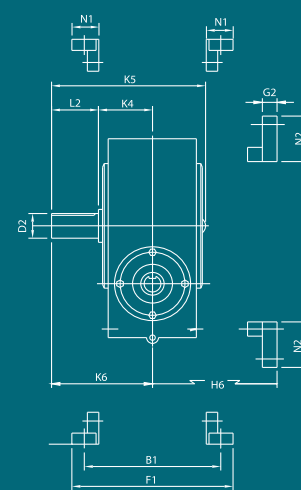
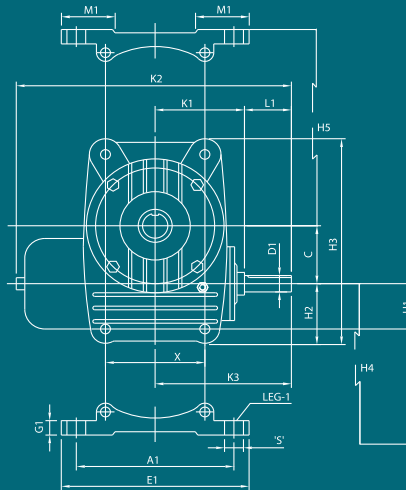
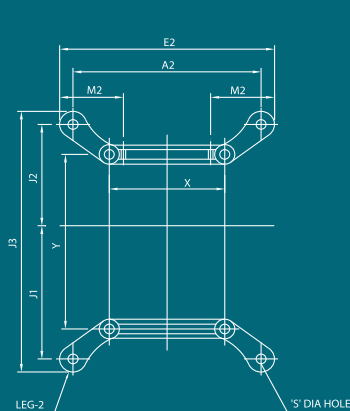
AVRU



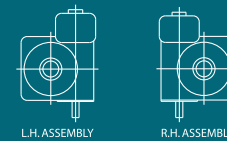
AHR



AVRD



INPUT SHAFT DETAILS OUTPUT SHAFT DETAILS



L.H. ASSEMBLY R.H. ASSEMBLY

| SIZE | MOUNTING DETAILS | | | | CLEARANCE DIMENSIONS | | | | | | | | SHAFT END DIMENSIONS | | | | | | | |
|---------|------------------|-----|-----|------|----------------------|-----|-----|-----|-----|-----|-----|-----|----------------------|----|----|----|----|----|----|----|
| | C | X | Y | H1 | H2 | H3 | K1 | K2 | K3 | K4 | K5 | K6 | D1 | U1 | T1 | L1 | D2 | U2 | T2 | L2 |
| A 1.125 | 28.57 | 68 | 105 | 35 | 44 | 131 | 54 | 210 | 92 | 44 | 124 | 79 | 12 | 5 | 14 | 38 | 15 | 5 | 17 | 35 |
| A 1.75 | 44.45 | 88 | 146 | 46 | 56 | 180 | 73 | 270 | 122 | 52 | 138 | 98 | 16 | 5 | 18 | 36 | 22 | 6 | 25 | 46 |
| A 2 | 50.80 | 102 | 154 | 45 | 56 | 185 | 86 | 279 | 133 | 63 | 185 | 120 | 16 | 5 | 18 | 47 | 25 | 8 | 28 | 57 |
| A 2.25 | 57.15 | 119 | 193 | 52 | 69 | 228 | 96 | 325 | 149 | 76 | 213 | 133 | 22 | 8 | 25 | 53 | 25 | 8 | 28 | 57 |
| A 2.5 | 63.50 | 135 | 213 | 57.5 | 72.5 | 248 | 108 | 340 | 164 | 83 | 225 | 143 | 24 | 8 | 27 | 56 | 32 | 10 | 35 | 60 |
| A 3 | 76.20 | 150 | 236 | 62.5 | 84 | 282 | 111 | 370 | 168 | 94 | 259 | 169 | 25 | 8 | 28 | 57 | 38 | 10 | 41 | 75 |
| A 3.5 | 88.90 | 172 | 268 | 78.5 | 93.5 | 316 | 133 | 415 | 203 | 100 | 267 | 176 | 32 | 10 | 35 | 70 | 44 | 12 | 47 | 76 |

| SIZE | LEG NO - 1 | | | | | | | | | | LEG NO - 2 | | | | | | | | | |
|---------|------------|-----|-----|-----|-------|-------|----|----|----|----|------------|-----|-------|-------|-----|-------|----|----|----|----|
| | A1 | B1 | E1 | F1 | H4 | H5 | M1 | N1 | G1 | S | A2 | E2 | J1 | J2 | J3 | H6 | M2 | N2 | G2 | S |
| A 1.125 | 105 | 90 | 130 | 110 | 58 | 64.5 | 35 | 19 | 11 | 9 | 106 | 130 | 77.1 | 54.9 | 160 | 64 | 42 | 39 | 11 | 9 |
| A 1.75 | 127 | 102 | 155 | 140 | 71 | 80.5 | 45 | 27 | 14 | 10 | 127 | 154 | 112.5 | 77.5 | 222 | 72 | 50 | 50 | 14 | 10 |
| A 2 | 152 | 118 | 185 | 145 | 70 | 83.2 | 50 | 28 | 14 | 10 | 151 | 185 | 117.8 | 80.2 | 231 | 71 | 55 | 51 | 14 | 10 |
| A 2.25 | 171 | 150 | 195 | 175 | 81 | 112.8 | 50 | 28 | 15 | 13 | 171 | 200 | 135.1 | 109.8 | 268 | 86 | 57 | 53 | 15 | 13 |
| A 2.5 | 192 | 160 | 222 | 190 | 89.5 | 124 | 60 | 30 | 17 | 13 | 191 | 222 | 143.5 | 114.5 | 298 | 102.5 | 68 | 53 | 17 | 13 |
| A 3 | 209 | 171 | 245 | 210 | 102 | 136.8 | 67 | 36 | 22 | 14 | 209 | 242 | 172.7 | 131.3 | 350 | 99 | 68 | 70 | 22 | 14 |
| A 3.5 | 235 | 197 | 280 | 240 | 117.5 | 139.6 | 60 | 40 | 22 | 14 | 237 | 280 | 194.9 | 128.1 | 360 | 116 | 75 | 64 | 22 | 14 |

NOTE :

- ALL DIMENSIONS ARE IN mm.
- THESE DIMENSIONS ARE FOR PRELIMINARY USE ONLY AND ARE SUBJECT TO OUR CONFIRMATION.
- SHAFT DIA TOLERANCE UPTO 58 DIA k6 & ABOVE 58 DIA m6

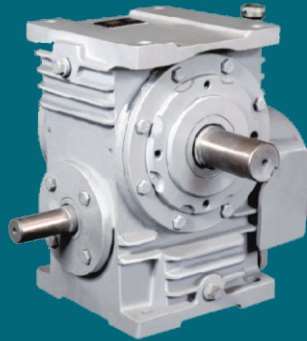
SCU Type Worm Gear Unit



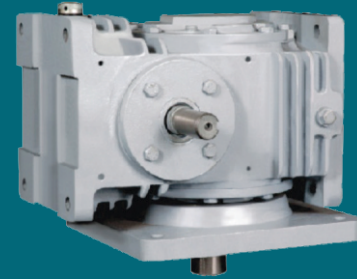
SHIV
CETRON GEARS



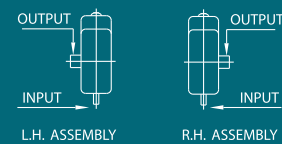
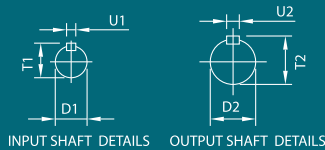
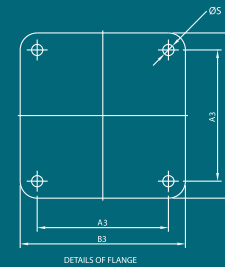
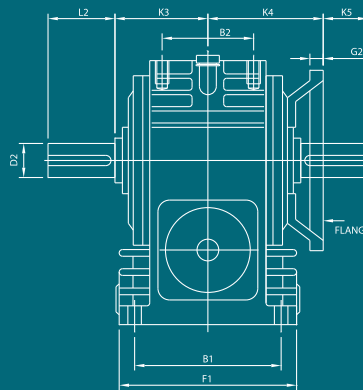
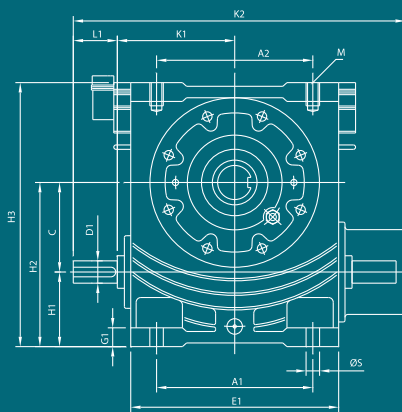
SCUUVU



SCUH



SCUVD



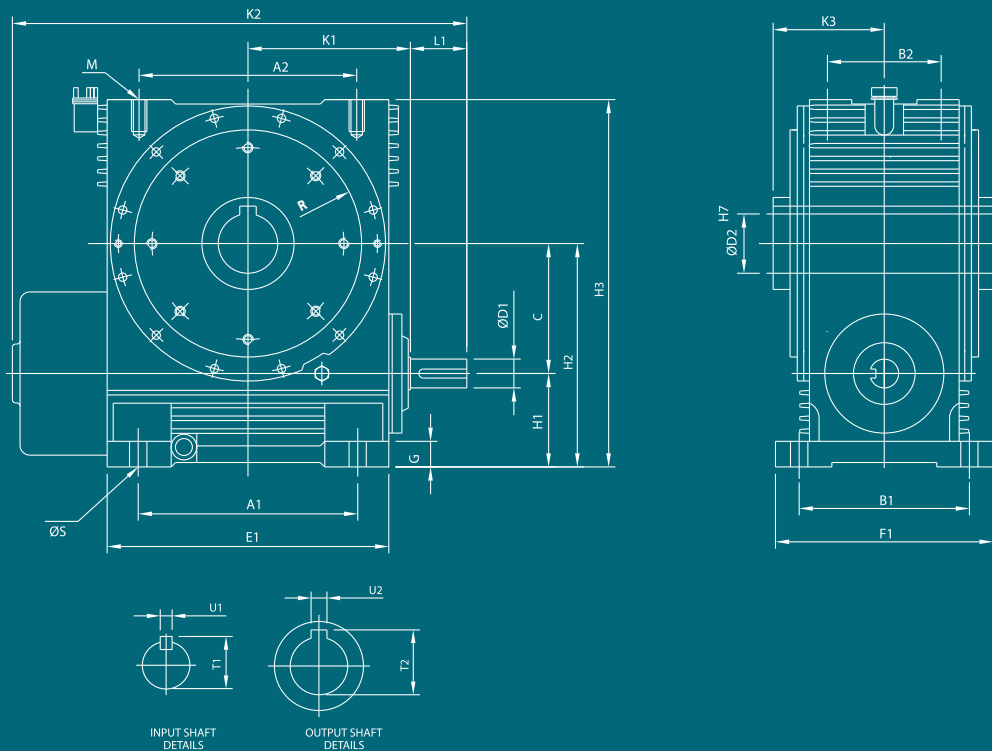
| SIZE | HORIZONTAL MOUNTING | | | | | | | | VERTICAL FLANGE | | | | CLEARANCE DIMENSIONS | | | | | | | | | SHAFT END DIMENSIONS | | | | | | | | | |
|---------|---------------------|-----|-----|-----|-----|-----|----|----|-----------------|-----|----|-----|----------------------|-----|-------|-------|-----|-----|-----|-----|----|----------------------|----|------|-----|----|----|------|-----|--|--|
| | A1 | B1 | E1 | F1 | A2 | B2 | G1 | S | A3 | B3 | G2 | M | C | H1 | H2 | H3 | K1 | K2 | K3 | K4 | K5 | D1 | U1 | T1 | L1 | D2 | U2 | T2 | L2 | | |
| CU 1.75 | 114 | 92 | 142 | 116 | 114 | 92 | 12 | 11 | 120 | 150 | 14 | -- | 44.45 | 57 | 101.5 | 171.5 | 74 | 260 | 62 | 88 | 20 | 16 | 5 | 18 | 36 | 22 | 8 | 25 | 44 | | |
| CU 2 | 95 | 100 | 142 | 125 | 95 | 100 | 14 | 11 | 120 | 150 | 14 | -- | 50.8 | 70 | 120.8 | 203.8 | 86 | 280 | 71 | 94 | 34 | 16 | 5 | 18 | 47 | 25 | 8 | 28 | 57 | | |
| CU 2.25 | 105 | 105 | 152 | 132 | 105 | 105 | 14 | 11 | 120 | 150 | 14 | -- | 57.15 | 70 | 127.2 | 212.1 | 96 | 312 | 76 | 100 | 36 | 22 | 8 | 25 | 53 | 25 | 8 | 28 | 60 | | |
| CU 2.5 | 120 | 105 | 166 | 140 | 120 | 105 | 18 | 11 | 135 | 165 | 14 | -- | 63.5 | 70 | 133.5 | 233.5 | 108 | 342 | 83 | 118 | 25 | 24 | 8 | 27 | 56 | 32 | 10 | 35 | 60 | | |
| CU 3 | 140 | 160 | 180 | 192 | 140 | 160 | 20 | 14 | 200 | 240 | 16 | -- | 76.2 | 102 | 178.2 | 283.0 | 111 | 350 | 100 | 125 | 50 | 25 | 8 | 28 | 57 | 38 | 10 | 41 | 75 | | |
| CU 3.5 | 180 | 180 | 220 | 210 | 180 | 180 | 22 | 18 | 210 | 250 | 16 | -- | 88.9 | 105 | 193.9 | 328.9 | 133 | 422 | 100 | 125 | 51 | 32 | 10 | 35 | 55 | 44 | 12 | 47 | 90 | | |
| CU 4 | 180 | 160 | 250 | 200 | 200 | 100 | 25 | 18 | 235 | 280 | 20 | M16 | 101.6 | 108 | 209.6 | 325 | 165 | 483 | 125 | 140 | 75 | 32 | 10 | 35 | 64 | 45 | 14 | 48.5 | 90 | | |
| CU 5 | 220 | 200 | 300 | 252 | 240 | 130 | 30 | 18 | 260 | 320 | 22 | M16 | 127 | 118 | 245 | 385 | 190 | 554 | 135 | 185 | 50 | 35 | 10 | 38 | 70 | 50 | 14 | 53.5 | 100 | | |
| CU 6 | 266 | 241 | 354 | 302 | 280 | 150 | 32 | 22 | 270 | 340 | 25 | M20 | 152.4 | 127 | 279.4 | 450 | 204 | 585 | 160 | 180 | 94 | 38 | 10 | 41 | 75 | 58 | 16 | 62 | 114 | | |
| CU 7 | 306 | 265 | 400 | 340 | 320 | 150 | 36 | 22 | 320 | 400 | 40 | M20 | 177.8 | 146 | 323.8 | 524 | 229 | 647 | 157 | 200 | 87 | 40 | 12 | 43 | 82 | 65 | 18 | 69 | 130 | | |
| CU 8 | 343 | 265 | 440 | 340 | 340 | 160 | 40 | 27 | 360 | 440 | 40 | M20 | 203.2 | 146 | 349.2 | 574 | 254 | 709 | 172 | 220 | 92 | 45 | 14 | 48.5 | 88 | 70 | 20 | 74.5 | 140 | | |
| CU 9 | 390 | 282 | 490 | 344 | 386 | 180 | 40 | 27 | 410 | 490 | 40 | M20 | 228.6 | 154 | 382.6 | 635 | 280 | 770 | 180 | 240 | 85 | 50 | 14 | 53.5 | 95 | 75 | 20 | 79.5 | 145 | | |
| CU 10.5 | 432 | 330 | 590 | 430 | 440 | 220 | 50 | 33 | 480 | 560 | 40 | M20 | 266.7 | 172 | 438.7 | 720 | 335 | 911 | 202 | 260 | 92 | 60 | 18 | 64 | 115 | 80 | 22 | 85.5 | 150 | | |

NOTE :

- ALL DIMENSIONS ARE IN mm.
- THESE DIMENSIONS ARE FOR PRELIMINARY USE ONLY AND ARE SUBJECT TO OUR CONFIRMATION.
- SHAFT DIA TOLERANCE UPTO 58 DIA k6 & ABOVE 58 DIA m6



SCUSM



| SIZE | A1 | B2 | E1 | F1 | G | ØS | A2 | B2 | M | C | H1 | H2 | H3 | K1 | K2 | K3 | D1 | U1 | T1 | L1 | D2 | U2 | T2 |
|-----------|-----|-----|-----|-----|----|-----|-----|-----|-----|-------|-----|-------|-------|-----|-----|-----|----|----|------|-----|-----|----|-------|
| CUSM 2 | 95 | 100 | 142 | 125 | 14 | Ø11 | 95 | 100 | Ø11 | 50.8 | 70 | 120.8 | 203.8 | 86 | 279 | 75 | 16 | 5 | 18 | 47 | 25 | 8 | 28.3 |
| CUSM 2.25 | 105 | 105 | 152 | 132 | 14 | Ø11 | 105 | 105 | Ø11 | 57.15 | 70 | 127.2 | 212.1 | 96 | 312 | 75 | 22 | 8 | 25 | 53 | 30 | 8 | 33.3 |
| CUSM 2.5 | 120 | 105 | 166 | 140 | 14 | Ø11 | 120 | 105 | Ø11 | 63.5 | 70 | 133.5 | 233.5 | 108 | 342 | 75 | 24 | 8 | 27 | 56 | 30 | 8 | 33.3 |
| CUSM 3 | 140 | 160 | 180 | 192 | 20 | Ø14 | 140 | 160 | Ø14 | 76.2 | 102 | 178.2 | 283.2 | 111 | 350 | 100 | 25 | 8 | 28 | 57 | 50 | 14 | 53.8 |
| CUSM 4 | 180 | 160 | 250 | 200 | 25 | Ø18 | 200 | 100 | M16 | 101.6 | 108 | 209.6 | 324.6 | 165 | 483 | 115 | 32 | 10 | 35 | 64 | 65 | 18 | 69.4 |
| CUSM 5 | 220 | 200 | 300 | 252 | 30 | Ø18 | 240 | 130 | M16 | 127 | 118 | 245 | 385 | 190 | 545 | 145 | 35 | 10 | 38 | 70 | 70 | 20 | 75.1 |
| CUSM 6 | 266 | 241 | 354 | 302 | 32 | Ø23 | 280 | 150 | M20 | 152.4 | 127 | 279.4 | 449.4 | 204 | 585 | 165 | 38 | 10 | 41 | 75 | 75 | 20 | 80.1 |
| CUSM 7 | 306 | 266 | 400 | 340 | 36 | Ø23 | 320 | 150 | M20 | 177.8 | 146 | 323.8 | 523.8 | 229 | 647 | 160 | 40 | 12 | 43 | 82 | 80 | 22 | 85.6 |
| CUSM 8 | 343 | 266 | 440 | 340 | 40 | Ø27 | 340 | 160 | M20 | 203.2 | 146 | 349.2 | 574.2 | 254 | 709 | 180 | 45 | 14 | 48.5 | 88 | 90 | 25 | 95.6 |
| CUSM 9 | 390 | 282 | 490 | 344 | 40 | Ø27 | 386 | 180 | M20 | 228.6 | 154 | 382.6 | 635 | 280 | 770 | 190 | 50 | 14 | 53.5 | 95 | 95 | 25 | 100.6 |
| CUSM 10.5 | 432 | 330 | 590 | 430 | 50 | Ø33 | 440 | 220 | M20 | 266.7 | 172 | 438.7 | 720 | 335 | 911 | 205 | 60 | 18 | 64 | 115 | 100 | 28 | 106.6 |

NOTE :

- ALL DIMENSIONS ARE IN mm.
- THESE DIMENSIONS ARE FOR PRELIMINARY USE ONLY AND ARE SUBJECT TO OUR CONFIRMATION.
- SHAFT DIA TOLERANCE UPTO 58 DIA k6 & ABOVE 58 DIA m6

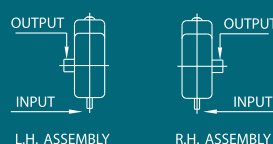
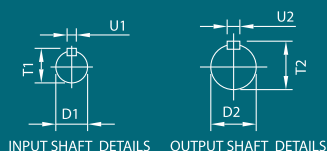
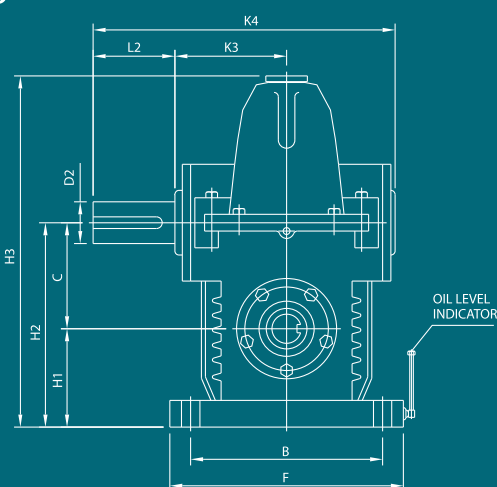
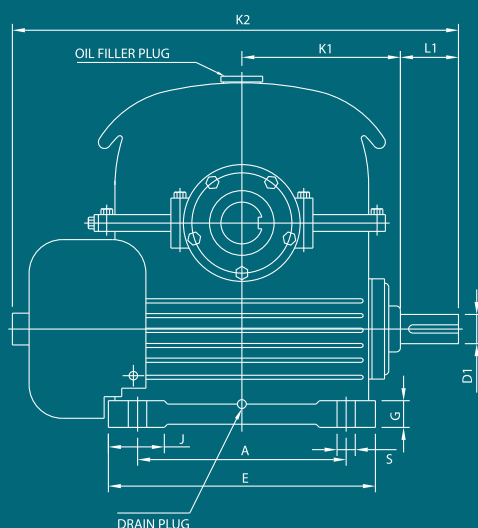
FHU Type Worm Gear Unit



SHIV
CETRON GEARS



FHU



| SIZE | MOUNTING DETAILS | | | | | | | CLEARANCE DIMENSIONS | | | | | | | | SHAFT END DIMENSIONS | | | | | | | |
|----------|------------------|-----|-----|-----|----|-----|----|----------------------|-----|-------|-----|-----|-----|-----|-----|----------------------|----|------|-----|----|----|------|-----|
| | A | B | E | F | G | J | S | C | H1 | H2 | H3 | K1 | K2 | K3 | K4 | D1 | U1 | T1 | L1 | D2 | U2 | T2 | L2 |
| FHU 2.5 | 130 | 125 | 165 | 160 | 22 | 45 | 14 | 63.5 | 78 | 141.5 | 229 | 108 | 340 | 83 | 218 | 24 | 8 | 27 | 56 | 32 | 10 | 35 | 60 |
| FHU 3 | 140 | 182 | 184 | 222 | 25 | 54 | 14 | 76.2 | 102 | 178.2 | 305 | 111 | 361 | 127 | 293 | 25 | 8 | 28 | 57 | 38 | 10 | 41 | 75 |
| FHU 3.5 | 190 | 175 | 230 | 215 | 25 | 55 | 14 | 88.9 | 100 | 188.9 | 311 | 133 | 418 | 100 | 280 | 32 | 10 | 35 | 70 | 44 | 12 | 47 | 75 |
| FHU 4 | 216 | 204 | 270 | 254 | 32 | 67 | 22 | 101.6 | 108 | 209.6 | 365 | 165 | 483 | 127 | 338 | 32 | 10 | 35 | 64 | 45 | 14 | 48.5 | 88 |
| FHU 5 | 250 | 230 | 320 | 280 | 32 | 67 | 22 | 127 | 118 | 245 | 421 | 190 | 545 | 137 | 365 | 35 | 10 | 38 | 70 | 50 | 14 | 53.5 | 95 |
| FHU 6 | 266 | 240 | 350 | 305 | 32 | 77 | 22 | 152.4 | 127 | 279.4 | 470 | 204 | 585 | 160 | 429 | 38 | 10 | 41 | 76 | 58 | 16 | 62 | 114 |
| FHU 7 | 308 | 258 | 400 | 320 | 36 | 84 | 27 | 177.8 | 146 | 323.8 | 540 | 229 | 647 | 157 | 410 | 40 | 12 | 43 | 82 | 65 | 18 | 69 | 95 |
| FHU 8 | 342 | 266 | 440 | 344 | 40 | 105 | 27 | 203.2 | 146 | 349.2 | 605 | 254 | 709 | 172 | 480 | 45 | 14 | 48.5 | 88 | 70 | 20 | 74.5 | 140 |
| FHU 9 | 390 | 282 | 490 | 344 | 40 | 100 | 27 | 228.6 | 154 | 382.6 | 650 | 280 | 770 | 180 | 482 | 50 | 14 | 53.5 | 95 | 75 | 20 | 79.5 | 125 |
| FHU 10.5 | 470 | 350 | 590 | 430 | 50 | 120 | 33 | 266.7 | 172 | 438.7 | 740 | 335 | 911 | 202 | 550 | 60 | 18 | 64 | 115 | 80 | 22 | 85.5 | 150 |
| FHU 12 | 530 | 440 | 690 | 540 | 55 | 150 | 33 | 304.8 | 200 | 504.8 | 860 | 360 | 990 | 216 | 589 | 60 | 18 | 64 | 125 | 85 | 22 | 90.5 | 165 |

NOTE :

- ALL DIMENSIONS ARE IN mm.
- THESE DIMENSIONS ARE FOR PRELIMINARY USE ONLY AND ARE SUBJECT TO OUR CONFIRMATION.
- SHAFT DIA TOLERANCE UPTO 58 DIA k6 & ABOVE 58 DIA m6

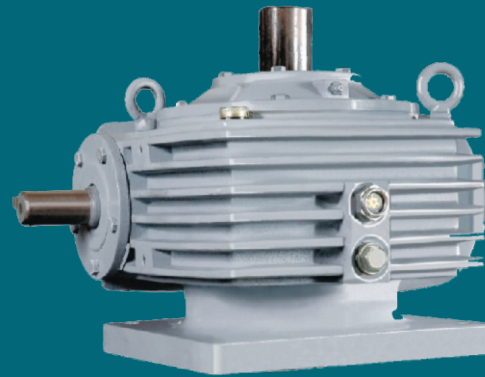


SHIV
CETRON GEARS

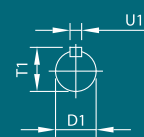
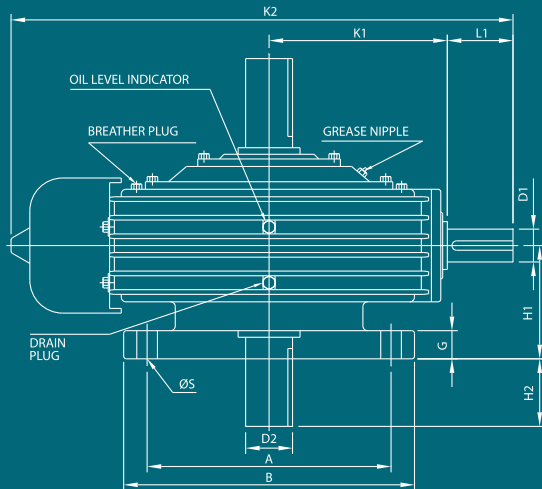
Vertical Type Worm Gear Unit



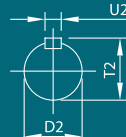
FVD



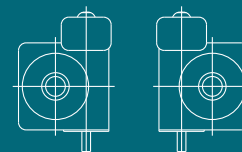
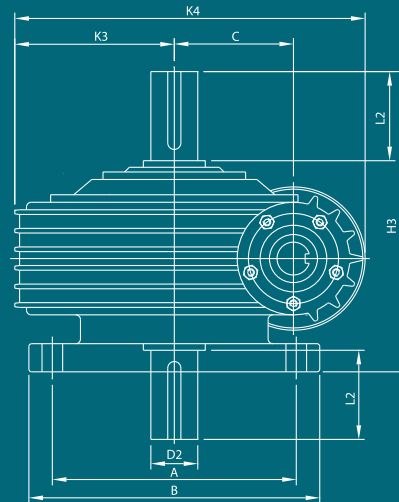
FVU



INPUT SHAFT DETAILS



OUTPUT SHAFT DETAILS



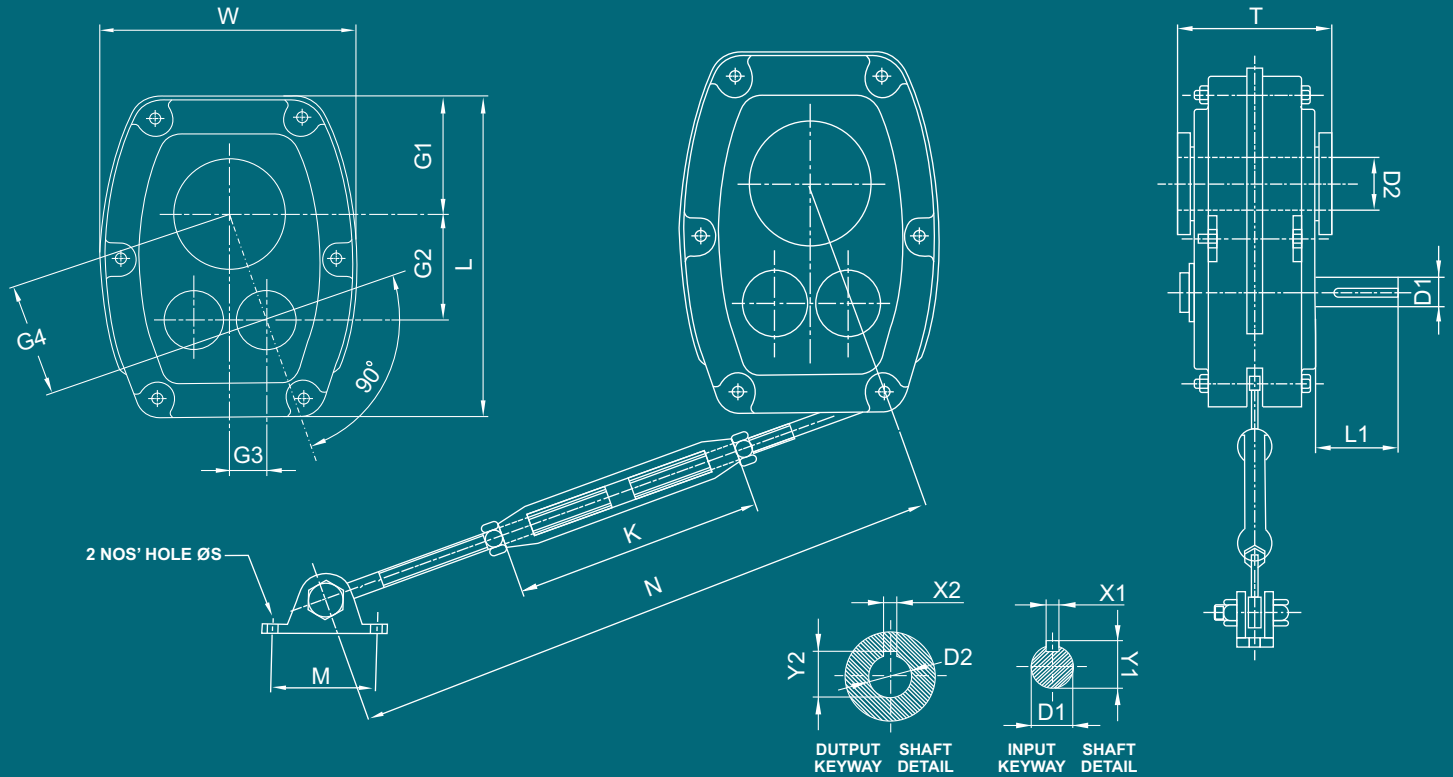
L.H. ASSEMBLY

R.H. ASSEMBLY

| SIZE | MOUNTING DETAILS | | | | CLEARANCE DIMENSIONS | | | | | | | | SHAFT END DIMENSIONS | | | | | | | |
|---------|------------------|-----|----|----|----------------------|-----|-----|-----|-----|-----|-----|-----|----------------------|----|------|-----|----|----|------|-----|
| | A | B | G | S | C | H1 | H2 | H3 | K1 | K2 | K3 | K4 | D1 | U1 | T1 | L1 | D2 | U2 | T2 | L2 |
| FV 3 | 200 | 240 | 20 | 14 | 76.2 | 125 | 61 | 311 | 111 | 348 | 118 | 280 | 25 | 8 | 28 | 57 | 38 | 10 | 41 | 75 |
| FV 3.5 | 210 | 250 | 20 | 14 | 88.9 | 125 | 51 | 302 | 133 | 415 | 126 | 340 | 32 | 10 | 35 | 70 | 44 | 12 | 47 | 76 |
| FV 4 | 235 | 285 | 25 | 18 | 101.6 | 140 | 75 | 355 | 165 | 469 | 140 | 327 | 32 | 10 | 35 | 64 | 45 | 14 | 48.5 | 88 |
| FV 5 | 260 | 320 | 30 | 22 | 127 | 160 | 72 | 392 | 190 | 535 | 170 | 403 | 35 | 10 | 38 | 70 | 50 | 14 | 53.5 | 95 |
| FV 6 | 270 | 340 | 35 | 24 | 152.4 | 180 | 94 | 454 | 204 | 574 | 195 | 462 | 38 | 10 | 41 | 76 | 58 | 16 | 62 | 114 |
| FV 7 | 320 | 400 | 40 | 26 | 177.8 | 200 | 57 | 457 | 229 | 636 | 222 | 530 | 40 | 12 | 43 | 82 | 65 | 18 | 69 | 100 |
| FV 8 | 360 | 440 | 45 | 26 | 203.2 | 220 | 92 | 532 | 254 | 704 | 244 | 595 | 45 | 14 | 48.5 | 88 | 70 | 20 | 74.5 | 140 |
| FV 9 | 410 | 490 | 50 | 26 | 228.6 | 240 | 65 | 545 | 280 | 770 | 272 | 660 | 50 | 14 | 53.5 | 95 | 75 | 20 | 79.5 | 125 |
| FV 10.5 | 460 | 560 | 55 | 33 | 266.7 | 260 | 92 | 612 | 335 | 911 | 320 | 765 | 60 | 18 | 64 | 115 | 80 | 22 | 85.5 | 150 |
| FV 12 | 500 | 620 | 60 | 33 | 304.8 | 280 | 101 | 661 | 360 | 990 | 350 | 850 | 60 | 18 | 64 | 125 | 85 | 22 | 90.5 | 165 |

NOTE : • ALL DIMENSIONS ARE IN mm.

- THESE DIMENSIONS ARE FOR PRELIMINARY USE ONLY AND ARE SUBJECT TO OUR CONFIRMATION.
- SHAFT DIA TOLERANCE UPTO 58 DIA k6 & ABOVE 58 DIA m6



| SIZE | CLEARANCE DIMENSIONS | | | | DETAILS OF MOUNTING | | | | TARQUE-ARM DETAILS | | | | I/P SHAFT DETAILS | | | | O/P SHAFT DETAILS | | |
|------|----------------------|-----|-----|-----|---------------------|-----|----|-----|--------------------|-----|----|-----|-------------------|-----|----|------|-------------------|----|-------|
| | T | L | W | G1 | G2 | G3 | G4 | K | N | | S | M | D1 | L1 | X1 | Y1 | D2 | X2 | Y2 |
| | | | | | | | | | MIN | MAX | | | | | | | | | |
| B | 134 | 226 | 186 | 186 | 81 | 75 | 25 | 200 | 600 | 750 | 10 | 59 | 19 | 63 | 6 | 22 | 30 | 8 | 33.5 |
| C | 142 | 270 | 218 | 218 | 96 | 90 | 31 | 200 | 600 | 750 | 10 | 65 | 22 | 72 | 8 | 25 | 40 | 12 | 43.5 |
| D | 152 | 328 | 258 | 258 | 117 | 110 | 37 | 216 | 700 | 850 | 12 | 68 | 25 | 77 | 8 | 27 | 50 | 14 | 54 |
| E | 170 | 377 | 278 | 278 | 129 | 125 | 43 | 216 | 700 | 850 | 12 | 76 | 28 | 85 | 8 | 31 | 55 | 16 | 59.5 |
| F | 189 | 414 | 317 | 317 | 143 | 141 | 50 | 216 | 750 | 900 | 16 | 87 | 32 | 90 | 10 | 35 | 65 | 18 | 69.5 |
| G | 212 | 468 | 365 | 365 | 162 | 156 | 56 | 216 | 750 | 900 | 16 | 110 | 42 | 105 | 12 | 45 | 75 | 20 | 80 |
| H | 242 | 550 | 434 | 434 | 195 | 189 | 62 | 222 | 750 | 900 | 16 | 115 | 48 | 116 | 14 | 51.5 | 85 | 22 | 86 |
| J | 257 | 700 | 542 | 542 | 264 | 255 | 75 | 222 | 750 | 900 | 16 | 119 | 55 | 135 | 16 | 59 | 100 | 28 | 106.5 |

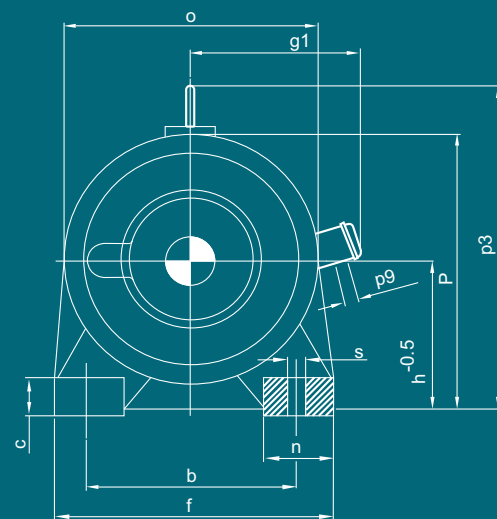
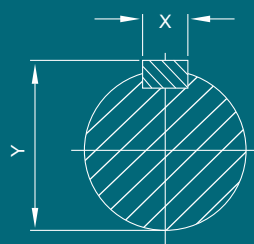
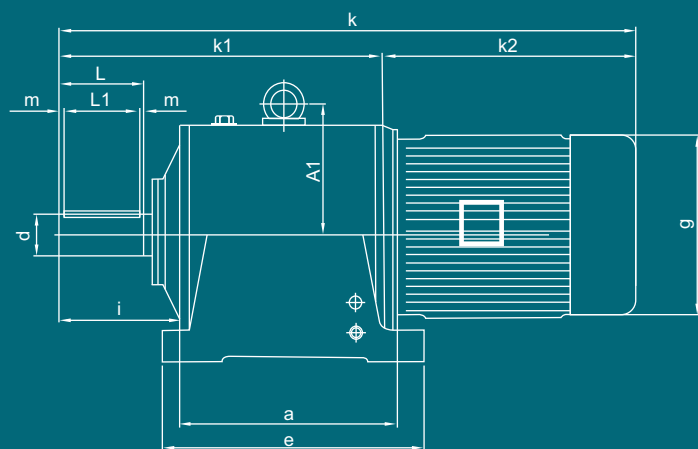
NOTE :

- ALL DIMENSIONS ARE IN mm.
- THESE DIMENSIONS ARE FOR PRELIMINARY USE ONLY AND ARE SUBJECT TO OUR CONFIRMATION.
- SHAFT DIA TOLERANCE UPTO 58 DIA k6 & ABOVE 58 DIA m6

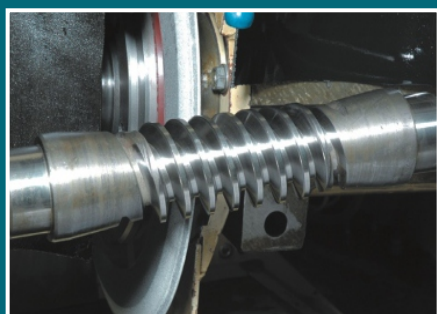
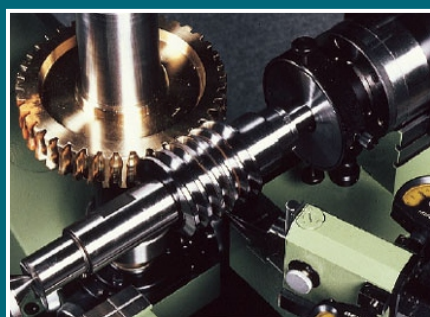
Helical Geared Motor



SHIV
CETRON GEARS



| SIZE | DETAILS OF MOUNTING | | | | | | | CLEARANCE DIMENSIONS | | | | | | DETAILS OF SHAFT END | | | | | |
|-------|---------------------|-----|----|-----|-----|-----|------|----------------------|-----|-----|-----|-----|---------------|----------------------|-----|-----|-----|----|-------|
| | a | b | c | e | f | n | s | h | l | k1 | o | p | p9 | d | L | L1 | m | x | y |
| S-32 | 140 | 140 | 22 | 170 | 180 | 40 | 11.5 | 100 | 88 | 217 | 160 | 180 | 13.5 | 25 | 60 | 50 | 5 | 8 | 27.9 |
| S-33 | 170 | 140 | 22 | 200 | 180 | 40 | 11.5 | 100 | 88 | 249 | 160 | 180 | 13.5 | 25 | 60 | 50 | 5 | 8 | 27.9 |
| S-42 | 165 | 180 | 28 | 200 | 220 | 50 | 14 | 112 | 110 | 259 | 190 | 207 | 13.5/21 | 32 | 80 | 70 | 5 | 10 | 35.3 |
| S-43 | 200 | 180 | 28 | 235 | 220 | 50 | 14 | 112 | 110 | 298 | 190 | 207 | 13.5/21 | 32 | 80 | 70 | 5 | 10 | 35.3 |
| S-52 | 200 | 205 | 30 | 240 | 250 | 56 | 18 | 132 | 142 | 316 | 220 | 242 | 13.5/21 | 40 | 110 | 100 | 5 | 12 | 43.1 |
| S-53 | 240 | 205 | 30 | 280 | 250 | 56 | 18 | 132 | 142 | 355 | 220 | 242 | 13.5/21 | 40 | 110 | 100 | 5 | 12 | 43.1 |
| S-62 | 230 | 250 | 40 | 280 | 310 | 70 | 23 | 160 | 150 | 355 | 260 | 20 | 13.5/21/29 | 50 | 110 | 100 | 5 | 14 | 53.5 |
| S-63 | 280 | 250 | 40 | 330 | 310 | 70 | 23 | 160 | 150 | 405 | 260 | 290 | 13.5/21/29 | 50 | 110 | 100 | 5 | 14 | 53.5 |
| S-72 | 260 | 280 | 45 | 320 | 350 | 80 | 27 | 180 | 189 | 422 | 300 | 330 | 13.5/21/29 | 60 | 140 | 125 | 7.5 | 18 | 64.2 |
| S-73 | 310 | 280 | 45 | 370 | 350 | 80 | 27 | 180 | 189 | 478 | 300 | 330 | 13.5/21/29 | 60 | 140 | 125 | 7.5 | 18 | 64.2 |
| S-82 | 320 | 300 | 55 | 390 | 400 | 100 | 27 | 225 | 196 | 482 | 365 | 408 | 13.5/21/29/36 | 70 | 140 | 125 | 7.5 | 20 | 74.6 |
| S-83 | 380 | 300 | 55 | 450 | 400 | 100 | 27 | 225 | 196 | 550 | 365 | 408 | 13.5/21/29/36 | 70 | 140 | 125 | 7.5 | 20 | 74.6 |
| S-93 | 440 | 390 | 55 | 530 | 490 | 110 | 33 | 250 | 236 | 644 | 420 | 466 | 21/29/36 | 90 | 180 | 160 | 10 | 25 | 95.6 |
| S-103 | 480 | 425 | 65 | 580 | 540 | 125 | 35 | 280 | 270 | 719 | 460 | 510 | 21/29/36 | 100 | 210 | 200 | 5 | 28 | 106.1 |



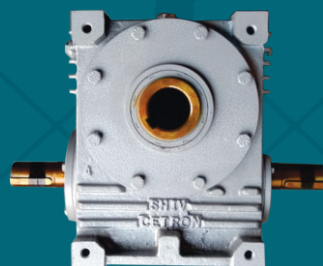
Details Of Actual Gear Ratio, Weight & Oil Capacity

| GEAR SIZE | NOMINAL RATIO | | | | | | | | | | | WEIGHT (kg) | OIL CAPACITY (Lt) |
|-----------|---------------|-------|-------|-------|------|------|------|------|------|------|------|-------------|-------------------|
| | 5.1 | 7.5:1 | 10:1 | 15:1 | 20:1 | 25:1 | 30:1 | 40:1 | 50:1 | 60:1 | 70:1 | | |
| 1.125 | 4.75 | 7.33 | 10.5 | 14.5 | 20.0 | 25.0 | 29.0 | 40.0 | 50.0 | --- | --- | 6.0 | 0.4 |
| 1.75 | 4.8 | 7.25 | 10.5 | 15.5 | 21.0 | 26.0 | 29.0 | 40.0 | 48.0 | 58.0 | 70.0 | 14.0 | 0.7 |
| 2 | 5.2 | 7.25 | 9.5 | 14.5 | 20.0 | 26.0 | 30.0 | 40.0 | 50.0 | 60.0 | 70.0 | 16.0 | 0.8 |
| 2.25 | 4.8 | 7.75 | 10.5 | 14.5 | 21.0 | 24.0 | 29.0 | 40.0 | 51.0 | 60.0 | 70.0 | 20.0 | 1.3 |
| 2.5 | 5.16 | 7.75 | 9.66 | 15.5 | 19.5 | 24.0 | 30.0 | 40.0 | 52.0 | 60.0 | 69.0 | 26.0 | 1.5 |
| 3 | 4.83 | 7.25 | 9.66 | 14.5 | 20.5 | 25.0 | 30.0 | 41.0 | 49.0 | 60.0 | 71.0 | 41.0 | 2.5 |
| 3.5 | 5.16 | 7.75 | 10.33 | 15.5 | 20.5 | 24.5 | 31.0 | 41.0 | 49.0 | 60.0 | 70.0 | 55.0 | 3.5 |
| 4 | 4.83 | 7.25 | 9.66 | 14.5 | 19.5 | 25.0 | 30.0 | 40.0 | 50.0 | 60.0 | 69.0 | 75.0 | 4.0 |
| 5 | 5.16 | 7.25 | 9.67 | 14.5 | 19.5 | 25.0 | 30.0 | 40.0 | 50.0 | 61.0 | 71.0 | 100.0 | 5.0 |
| 6 | 4.83 | 7.25 | 9.66 | 14.5 | 19.5 | 24.5 | 30.0 | 40.0 | 50.0 | 60.0 | 70.0 | 155.0 | 7.0 |
| 7 | 5.16 | 7.40 | 9.66 | 14.66 | 19.5 | 24.5 | 30.0 | 40.0 | 50.0 | 60.0 | 71.0 | 190.0 | 10.0 |
| 8 | 5.16 | 7.50 | 10.25 | 14.66 | 19.5 | 24.5 | 30.0 | 40.0 | 50.0 | 60.0 | 70.0 | 250.0 | 12.0 |

Other Product Range



Worm Gear Unit



Hollow Worm Gear Unit



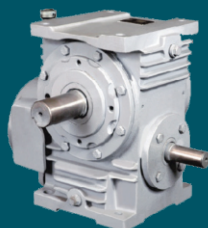
Heli-Worm Gear Unit



Helical Geared Motor



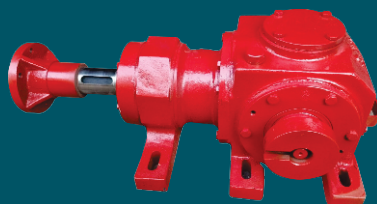
Helical Geared Motor



Universal Worm Gear Unit



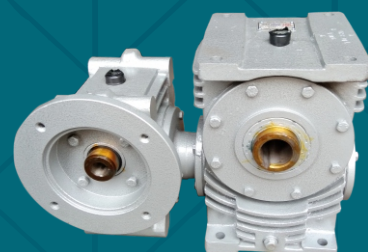
Shaft Mounted Helical Gear Unit



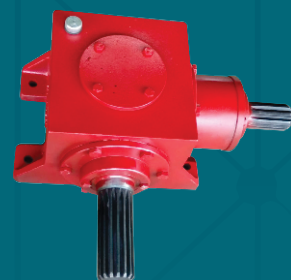
Thresher Gear Unit



Helical Gear Unit



Double Reduction Worm Geared Unit



Thresher Gear Unit



Double Reduction Worm Geared Unit



SHIV
CETRON GEARS



9924717980, 9574240849



Shed No : 94, Alok Ind. Estate, Opp. Shyamji
Krushna Varma Nagar, B/h. Vepari Mahamandal,
Odhav, Ahmedabad-382415
shivindus2020@gmail.com



GSTIN : 24AEDFS9881C1ZU